

# Elite 604

## multi media speaker cabinet



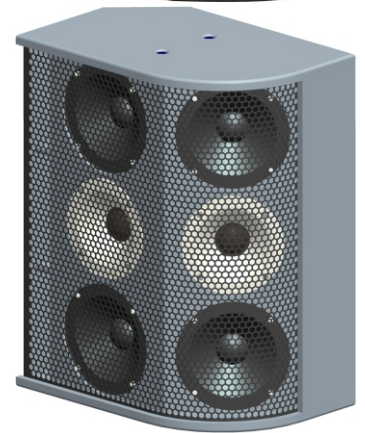
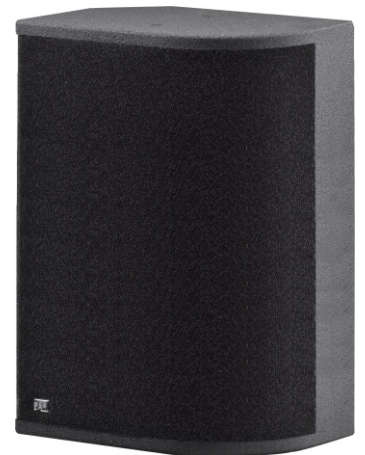
The **ELITE 604** is the Big Brother of the ELITE 602. The **ELITE 604** is equipped in total with four 6.5" specially designed **PSE-audio** midrange speakers and two unique and outstanding **PSE-audio** dome tweeter. The 6.5" speakers guarantee high sensitivity and high sound pressure by excellent performance of the midrange frequency response. For extraordinary brilliant high fidelity high frequencies **PSE-audio** has designed a unique and patented tweeter. The tweeter has a 43mm dome for brilliant and high resolution treble like best HiFi sound. The magnet structure is neodymium for high magnet strength and high sensitivity. The tweeter has a design integrated radial horn to increase the SPL and provide a constant directivity. This unique **PSE-audio** tweeter combines in a perfect way HiFi sound quality with PA sound pressure. One tweeter is assembled in the center of a line with 2 pcs. of the 6.5" midrange transducers and create a coaxial vertical line. The coaxial vertical line design of the **ELITE 604** has a significant advantage especially by vertical usage of the cabinet. A same trio of transducers is equipped 40° cross facing to increase the horizontal coverage angle to 150°! The housing design is unique as well and provides a lot of convenient and unexpected installation option. The **ELITE 604** is equipped with an advanced wall mounting bracket and can be fixed even to the wall without any distance. The bracket is

integrated in the back panel of the cabinet and can't be recognized from the front or side view. This installation option is unique and looks amazing together with the modern and fashion style cabinet design. There are more brackets available like "knee joint" and adapter plates to give the customers the most flexibility for mounting and using the advanced **ELITE 604**. The standard coating is a high strength and high scratch-resistant black pure PU coating. Optional **PSE-audio** provides standard structure varnishing in many colors and shiny piano mirror painting is available as well in different colors.

The standard using of the **ELITE 604** is horizontal while the cabinet can also be used 90° turned and upright. The **PSE-audio** logo is rotatable. There is a left and right version of **ELITE 604** available. By the left version the transducer trio (2 pcs. 6.5" speaker and one tweeter) on the left side is cross facing 40° by the right version the transducer trio on the right side is cross facing 40°.

The **ELITE 604** is suitable for many applications especially in combination with a subwoofer. Typical usage is for Cinema, Bars, Pubs, Karaoke, Conference rooms, home-cinema, powerful home-HiFi and so on.

The **ELITE-series** design is very esthetic and unique. The **ELITE-series** is the best choice for people who are looking for some extraordinary product with modern and fashion style, beyond that with brilliant clear and powerful audio performance.



specification ELITE-604	
rated impedance (optional)	8Ω (4Ω, 16Ω)
operation mode	passive
power handling capacity passive AES/peak*	500W / 1500W*
available frequency response**	75Hz-18kHz
max. sound pressure level***	126dB
directivity (h x v)	150°/90°
LF-transducer rated size	4 x 6.5"
LF-transducer voice coil diameter	1.35" (35mm)
LF-transducer magnet structure	ferrite
HF-tweeter rated size	2 x 1.75"
HF-tweeter voice coil diameter	1.75" (43mm)
HF-tweeter magnet structure	neodymium
black PU high strength structural coating	standard
structural traditional painting (different colors)	optional coating <sup>2</sup>
piano mirror painting (different colors)	optional coating <sup>3</sup>
front covering	10mm acoustic foam
housing	15mm MDF 1.class
dimension h/w/d in mm	540/423/275
weight	21.5kg

\* peak 10ms, with TD-8000 amplifier and ELITE-604 max controller setup

\*\* -10dB with ELITE-604 FR controller setup

\*\*\*1m free field, pink noise, crest factor 10dB, with TD-8000 and ELITE-604SPL controller setup

### small variety of wide range for bass cabinets extension

